

September 5<sup>th</sup> to December 9<sup>th</sup>, 2022



11 rue Pierre et Marie Curie  
75231 Paris Cedex 05  
France

Organizers:

Eddie Aamari (LPSM, CNRS), Catherine Aaron (LMBP, Université Clermont Auvergne)

Frédéric Chazal (LMO, INRIA), Aurélie Fischer (LPSM, Université de Paris)

Marc Hoffmann (CEREMADE, Paris Dauphine), Alice Le Brigant (SAMM, Paris 1 Panthéon Sorbonne)

Clément Levrard (LPSM, Université de Paris), Bertrand Michel (LMJL, Ecole Centrale Nantes)

# Geometry and Statistics in Data Sciences

Thematic program with short courses, seminars and workshops

## IESC Introducing School in Corsica

September 5<sup>th</sup> to 9<sup>th</sup>, 2022

## Non-Linear and High Dimensional Inference

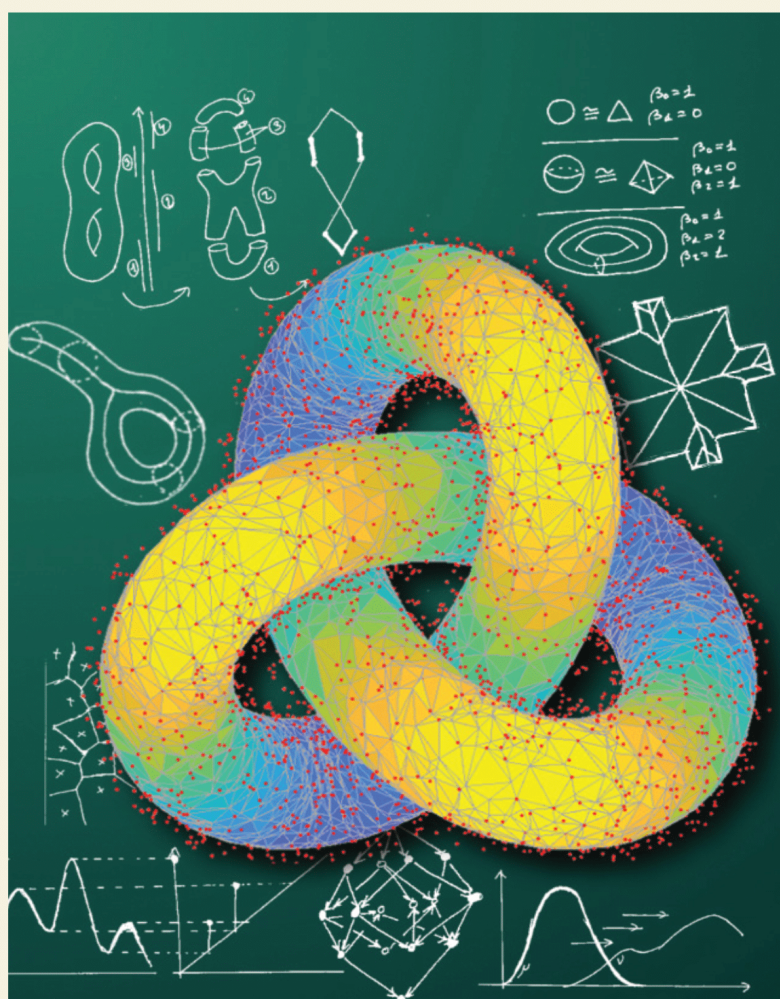
October 3<sup>rd</sup> to 7<sup>th</sup>, 2022

## Geometry, Topology and Statistics in Data Sciences

October 10<sup>th</sup> to 14<sup>th</sup>, 2022

## Measure-theoretic Approaches and Optimal Transportation in Statistics

November 21<sup>st</sup> to 25<sup>th</sup>, 2022



Program coordinated by the Centre Emile Borel (CEB) at IHP (Paris) and also accessible online

Participation of postdocs and PhD students is strongly encouraged

Registration is free however mandatory

Scientific program and registration on: <https://indico.math.cnrs.fr/category/498>

Deadline for financial support: March 15<sup>th</sup>, 2022

Contact: [gesda2022@ihp.fr](mailto:gesda2022@ihp.fr)

CEB organization assistant: Delphine Lépissier

CEB manager: Sylvie Lhermitte

[www.ihp.fr](http://www.ihp.fr)



Also supported by:

